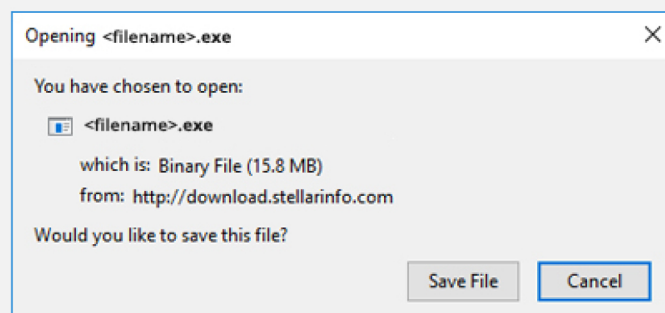


Stellar Repair for Exchange

Steps to Install

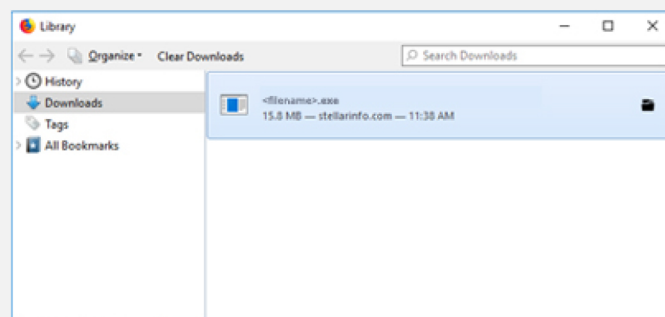
Step 1

When Opening Dialog Box Appears Click
Save File



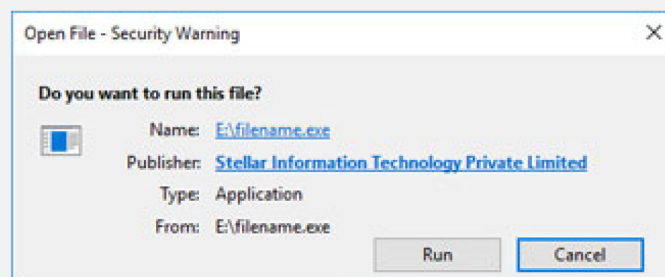
Step 2

When Downloads Windows Appears
Double-Click the File



Step 3

When Security Warning Dialog Box
Appears, Click Run



System Requirements:

Processor: Intel compatible (x86, x64)

Operating Systems: Windows 10, 8.1, 8, 7 & Windows Server 2016, 2012, 2008

Memory: 4 GB minimum (8 GB recommended)

Hard Disk: 250 MB of free space